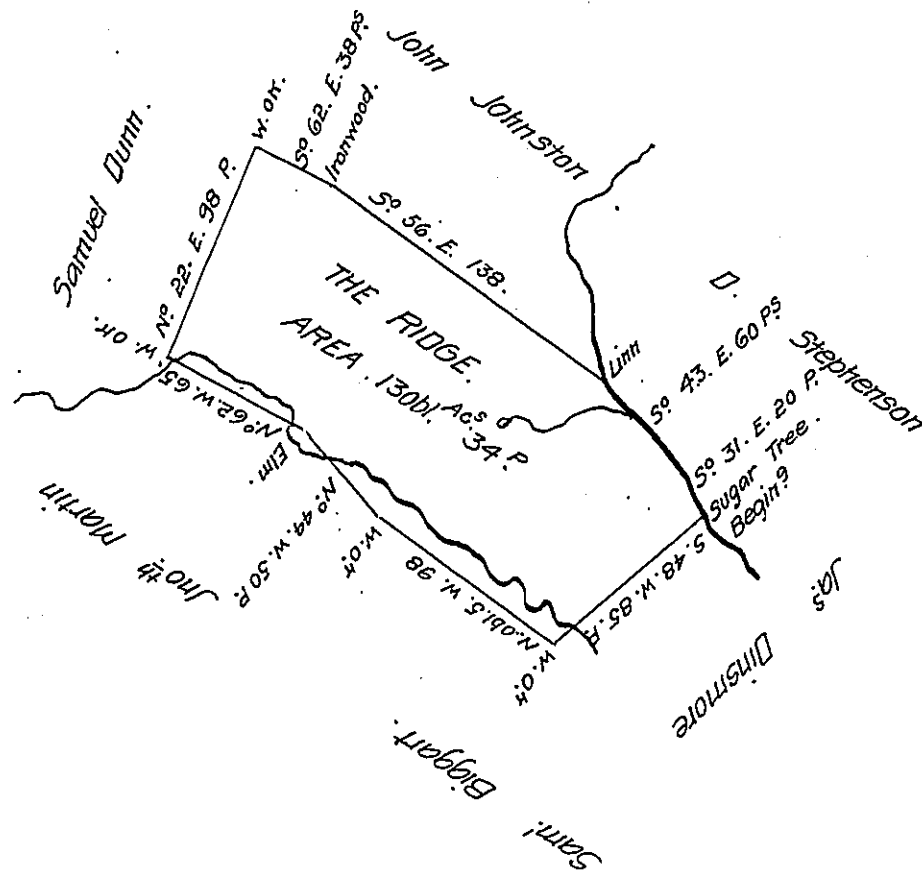


See G-87-229
D P-53-185



The above is a draught of a Tract of Land lying upon a branch of Charters Creek Washington County Called The Ridge Containing One hundred and thirty three Acres and thirty four perches with the usual allowance Surveyed in pursuance of a warrant from Philadelphia dated Feb^y. 21st 1785 for John Hays July 13th 1785.

Presley Nevill

} D. S's

Matt^y. Ritchie

John Lukens Esq^e

surv^{obl} Gen^l

IN TESTIMONY that the above is a copy of the original remaining on file in the Department of Internal Affairs of Pennsylvania, made conformably to an Act of Assembly approved the 16th day of February, 1833, I have hereunto set my Hand and caused the Seal of said Department to be affixed at Harrisburg, this fifteenth day of April 1908.

Henry Howells
Secretary of Internal Affairs.